



HYDRAULIC ELEVATORS, LLC

94 Valley Hill Road

Riverdale, Georgia 30274

Tel: 770-478-8344

Fax: 770-473-0296

Email: info@hydraulicelevatorsllc.com

# HYDRAULIC ELEVATORS, LLC

## PLUNGER SETTING FORM

**GENERAL JOB INFORMATION**

Job Name: Sample Building 1  
 Serial #: 17141  
 Job #: 0 | Record #: 12289  
 Job Type: Replacement  
 Elevator Type: In-Ground  
 Jack Assembly Type: Complete Assembly  
 Cylinder Material Type: Standard  
 Cylinder Joint Type: NPT Tapered Thread  
 Cylinder Size (O.D.): 6.625 In.  
 Plunger Material Type: Standard  
 Plunger Size (O.D.): 4.000" In.  
 Plunger Wall Thickness: 0.485 In.  
 Number of Pieces: 3  
 Maximum Section Length: 0 Ft. 0 In.  
 Priority? 1.EMERGENCY REPAIR 2.URGENT REPAIR 3.STANDARD REPLACEMENT: 3  
 JOB NOTES: 0

**JOB SPECIFICATIONS**

Car Weight in LBS: 2761  
 Capacity in LBS: 2500  
 Car Speed (feet/minute): 125  
 Floor to Floor Travel: 29 Ft. 9.750 In.  
 Top Over-Travel: 6.000 In.  
 Bottom Over-Travel: 10.000 In.  
 Total Travel: 31 Ft. 1.750 In.  
 Pit Depth: 48.250 In.  
 Center to Center of Pit Channels: 14.500 In.  
 Platform Thickness: 2.000 In.  
 Bolster Channel Height: 6.000 In.  
 Dimension Inside Bolster Channels: 0.000 In.  
 Inlet Type: Victaulic  
 Inlet Position (distance to center of inlet from pit floor): 17.000 In.  
 Inlet Size: 2.000 In.

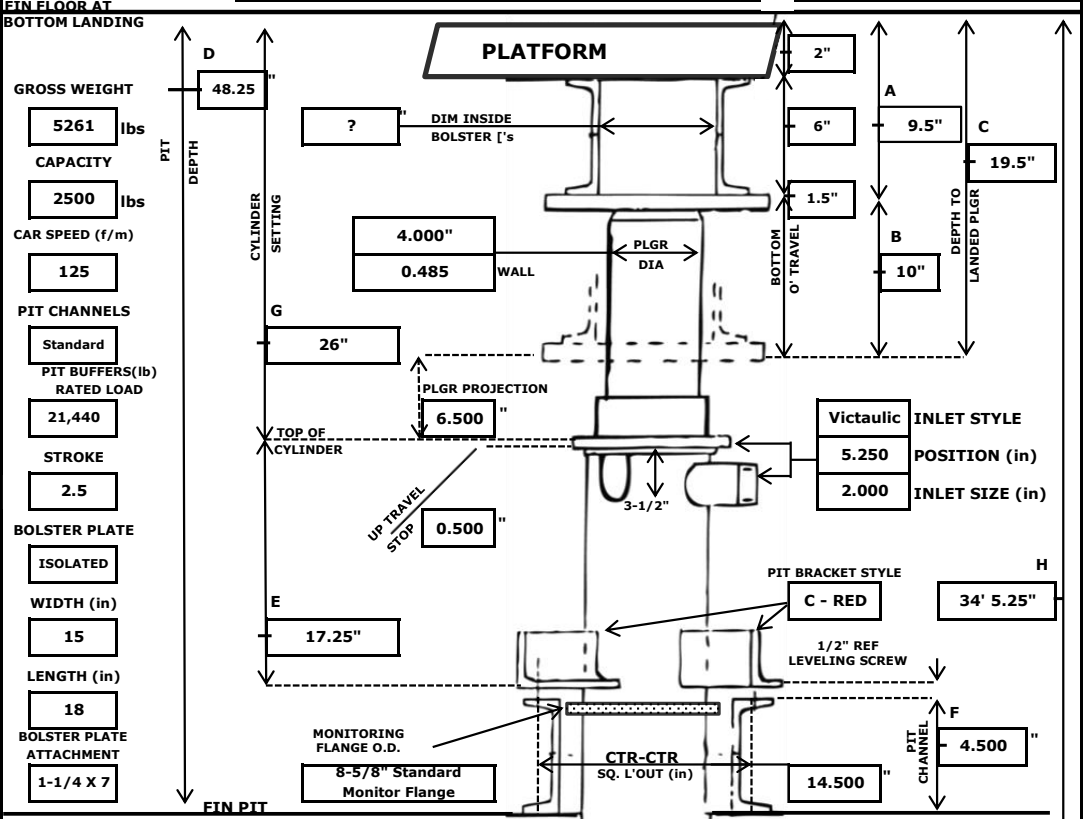
**JOB ACCESSORIES**

Bolster Plate? ISOLATED  
 Bolster Width: 15 In.  
 Bolster Length: 18 In.  
 Bolster Plate Thickness: 1.500 In.  
 Pit Channels? Standard Pit Channels  
 Channel Configuration: Standard Pit Channels  
 Pit Channel Height: 4.500 In.  
 Pit Buffers? Standard Load Pit Buffers  
 Spring Configuration: Standard Load Pit Buffers  
 Buffer Height off of Pit Floor: 35.750 In.  
 Tapecoat? No  
 PVC Liner? Yes  
 With Cylinder Flange? Yes  
 With Monitor Recovery System? Yes  
 Extra Packing for Jobsite? Yes  
 Lead Time Notes:  
 Special Req's:

**CUSTOMER INFORMATION**

COMPANY NAME: 123 ELEVATOR COMPANY  
 ADDRESS: 221B BAKER STREET, UNIT #1 ATLANTA, GA 30360  
 CONTACT NAME: John D  
 FAX NUMBER: 555-678-8913  
 PHONE NUMBER: 555-678-8912  
 EMAIL: johnd@email.com

SURVEY DATE: 8/10/2020



**PRESENT**

FLR-FLR TRAVEL	29	9.750	"
TOP O' TRAVEL	6.000	"	
BOT O' TRAVEL	10.000	"	
TOTAL TRAVEL	31	1.750	"
DIM E = D - C - F -	6.50	-	0.50
DIM G = C + 6.50	26.000	"	
CYL O/A = TOTAL TRAVEL + 4.50	31	6.250	"
PLGR O/A = TOTAL TRAVEL + 9.50	31	11.250	"
DIM H = TOTAL TRAVEL + C + 20.00	34	5.250	"
STOP RING LENGTH	2.000	In.	
PLUNGER OVERLAP	2.500	In.	

DATE: 9/3/2020

CUSTOMER SIGNATURE:

PLATFORM (in): 2.000  
 BOLSTER [ 's (in): 6.000  
 BOLSTER PLT (in): 1.500  
 DIM A (in): 9.500  
 DIM B (in): 10.000  
 DIM C (in): 19.500  
 3 PCS. ASSY. REQD.  
 CYLINDER DIA. (in): 6.625  
 COUPLING DIA. (in): 7.625

NOTES:



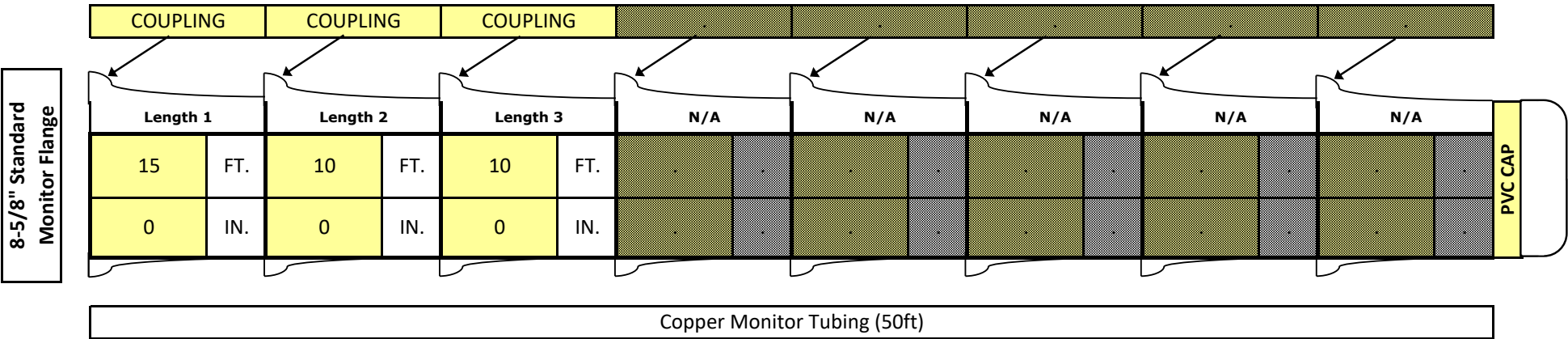
HYDRAULIC ELEVATORS, LLC  
 94 Valley Hill Road  
 Riverdale, Georgia 30274  
 Tel: 770-478-8344  
 Fax: 770-473-0296  
 Email:  
[info@hydraulicelevatorsllc.com](mailto:info@hydraulicelevatorsllc.com)

**HYDRAULIC ELEVATORS, LLC**  
  
**PVC LINER CUT DIAGRAM**

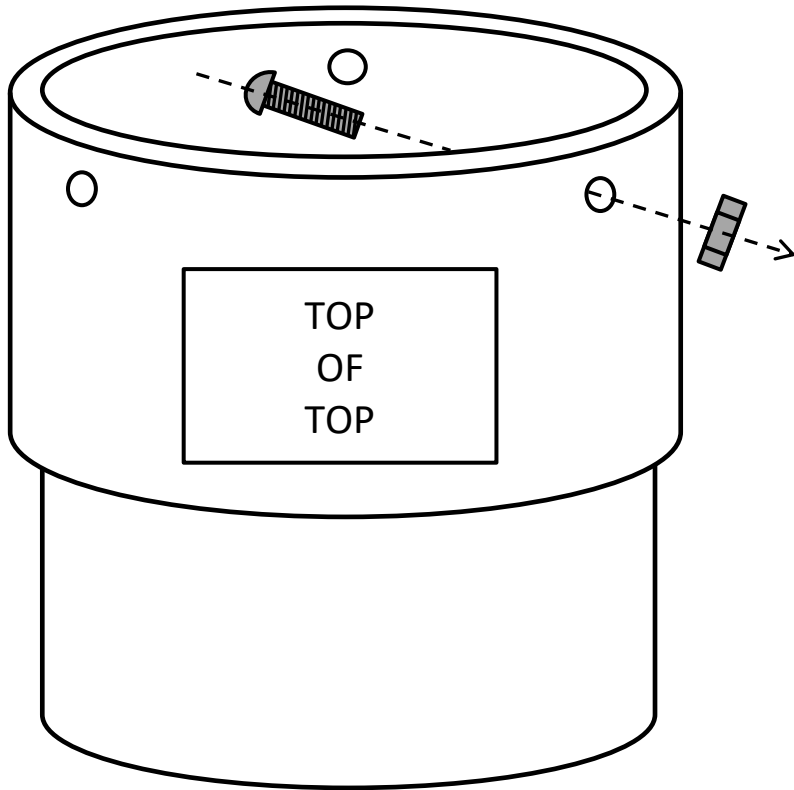
**JOB INFORMATION**

<b>Quote #</b>	<b>QHE-002775</b>	<b>Serial #</b>	<b>17141</b>
<b>Company Name</b>	<b>123 ELEVATOR COMPANY</b>	<b>PVC SIZE</b>	<b>8" PVC</b>
<b>Job Name</b>	<b>Sample Building 1</b>	<b>PVC Liner Total Net Length</b>	<b>34 FT 4.000 IN</b>
<b>Job #</b>	<b>0</b>	<b># of Sections</b>	<b>3 PCS.</b>
		<b>PVC THICKNESS</b>	<b>SCH 40</b>
		<b>Total # of PVC Joint Types</b>	<b>BELL ENDS 0 PVC COUPLING 3</b>
		<b>PVC Cap Included</b>	<b>8" PVC Cap</b>
		<b>Total # of PVC Glue Included</b>	<b>3 cans</b>

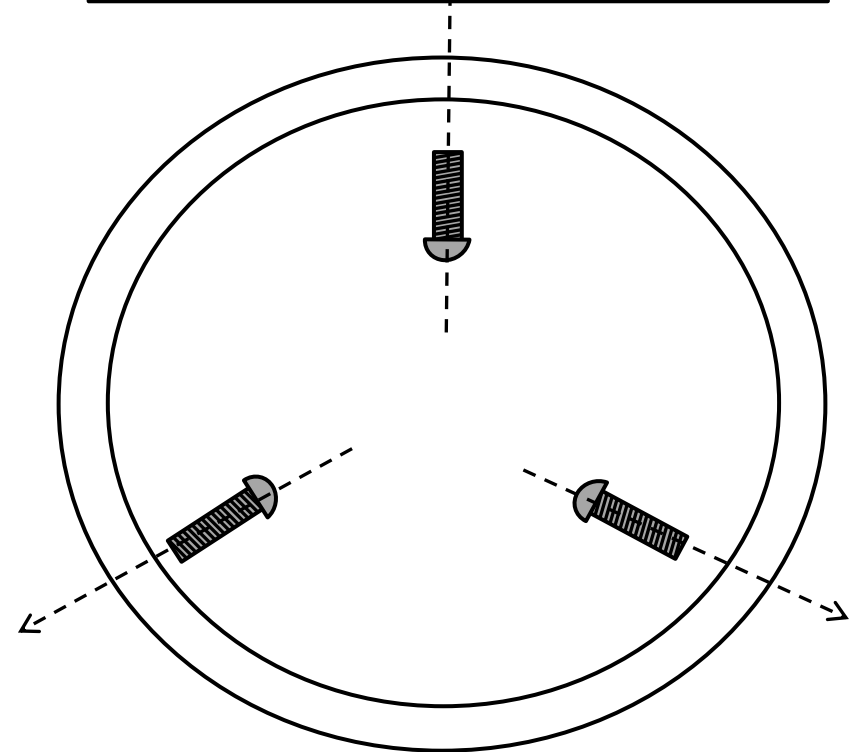
PVC CUT DIAGRAM



PVC SIDE VIEW



PVC TOP VIEW



3 BOLTS SUPPLIED IN BOX ARE FOR TOP OF PVC ASSEMBLY. SECURE AS SHOWN.

# HYDRAULIC ELEVATORS, LLC

PIT CHANNEL / PIT BUFFER LAYOUT

Quote # QHE-002775  
 Company Name 123 ELEVATOR COMPANY  
 Job Name Sample Building 1  
 Serial # 17141 Job # 0  
 Gross Load 5261 Car Speed 125

HYDRAULIC ELEVATORS, LLC  
 94 Valley Hill Road  
 Riverdale, Georgia 30274  
 Tel: 770-478-8344  
 Fax: 770-473-0296  
 Email: info@hydraulicelevatorsllc.com



## SPRING CONFIGURATION

RATED LOAD - 21,440 LBS



( 2-SPRINGS, STAND WITH SUPPORT ANGLES, 2- 22" SLOTTED C-CHANNEL STANDS )

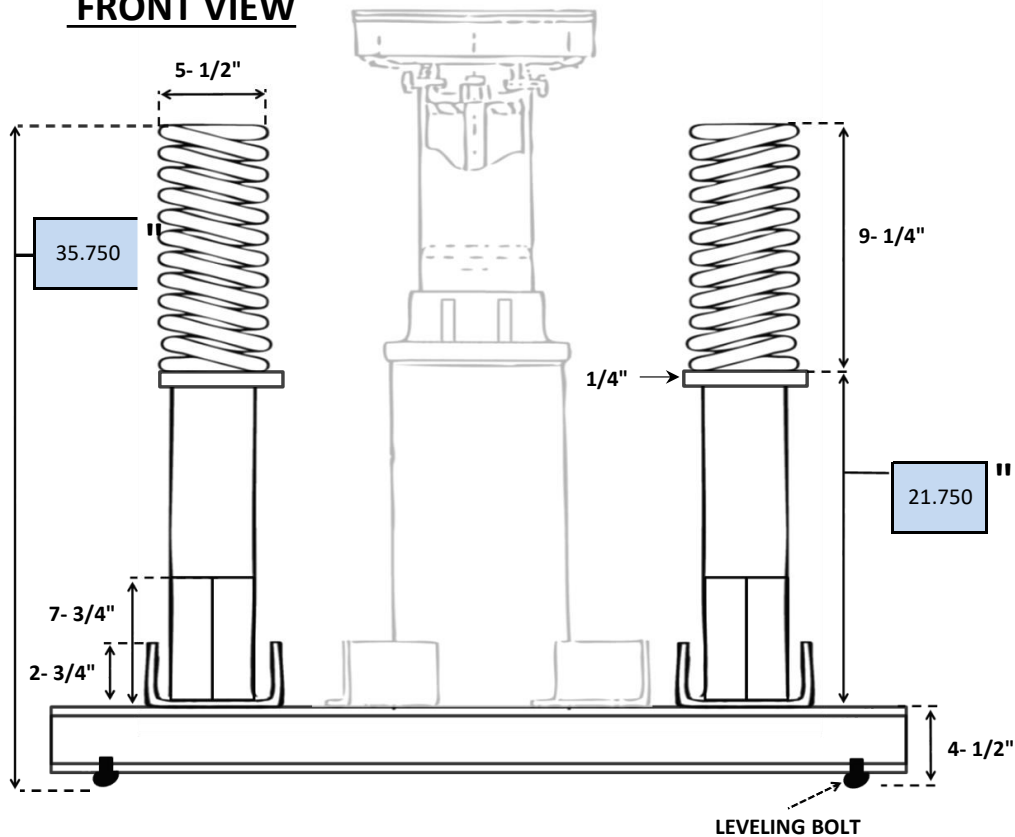
## PIT CHANNEL CONFIGURATION

STANDARD

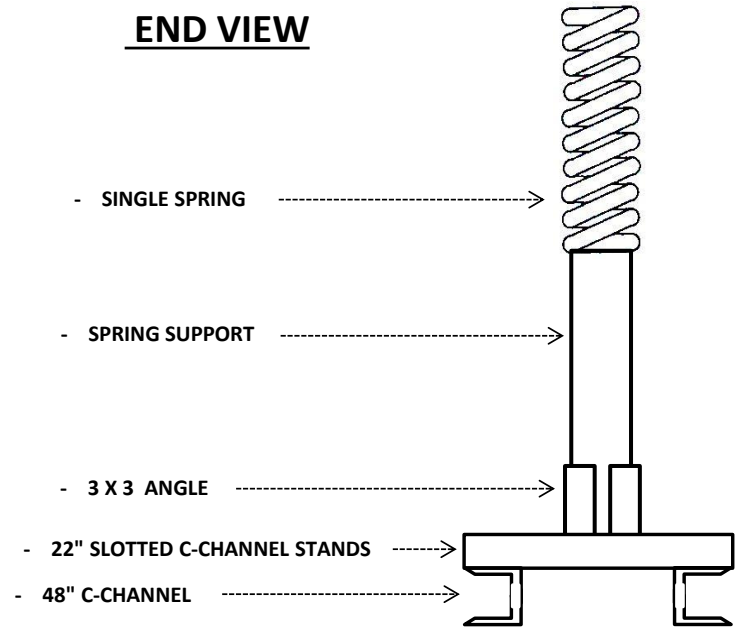


( 2- 48" C-CHANNEL, 4-LEVELING BOLTS, 4- CONNECTING BOLTS WITH WASHERS AND NUTS )

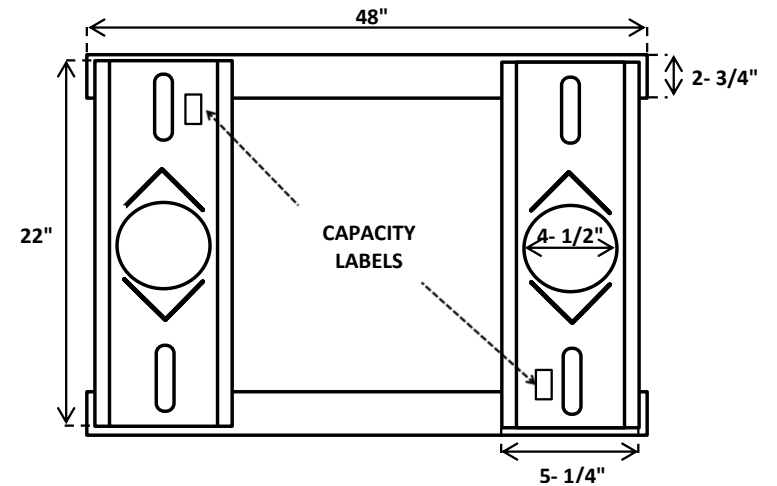
## FRONT VIEW

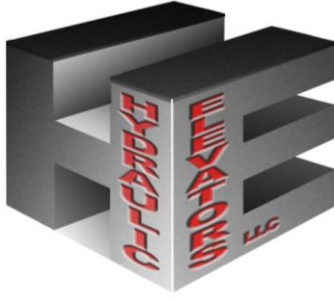


## END VIEW



## TOP VIEW





## **HYDRAULIC ELEVATORS, LLC**

94 VALLEY HILL ROAD

RIVERDALE, GEORGIA 30274

TEL: (770) 478-8344 FAX: (770)-473-0296

Email: [info@hydraulicelevatorsllc.com](mailto:info@hydraulicelevatorsllc.com)

---

### **INSTALLATION INSTRUCTIONS FOR MONITOR AND RECOVERY SYSTEM WHEN UTILIZING PVC LINER**

---

#### Installation Instructions

- 1) Attach 1/4" tubing to cylinder as it is assembled and lowered into the PVC liner.
- 2) Insert 1/4" tubing through the open hole of the Cylinder Flange before landing the Cylinder Flange into the top coupling of the PVC Liner.
- 3) Slide the provided compression fitting over the 1/4" tubing and screw the compression fitting into the open hole of the Cylinder Flange.

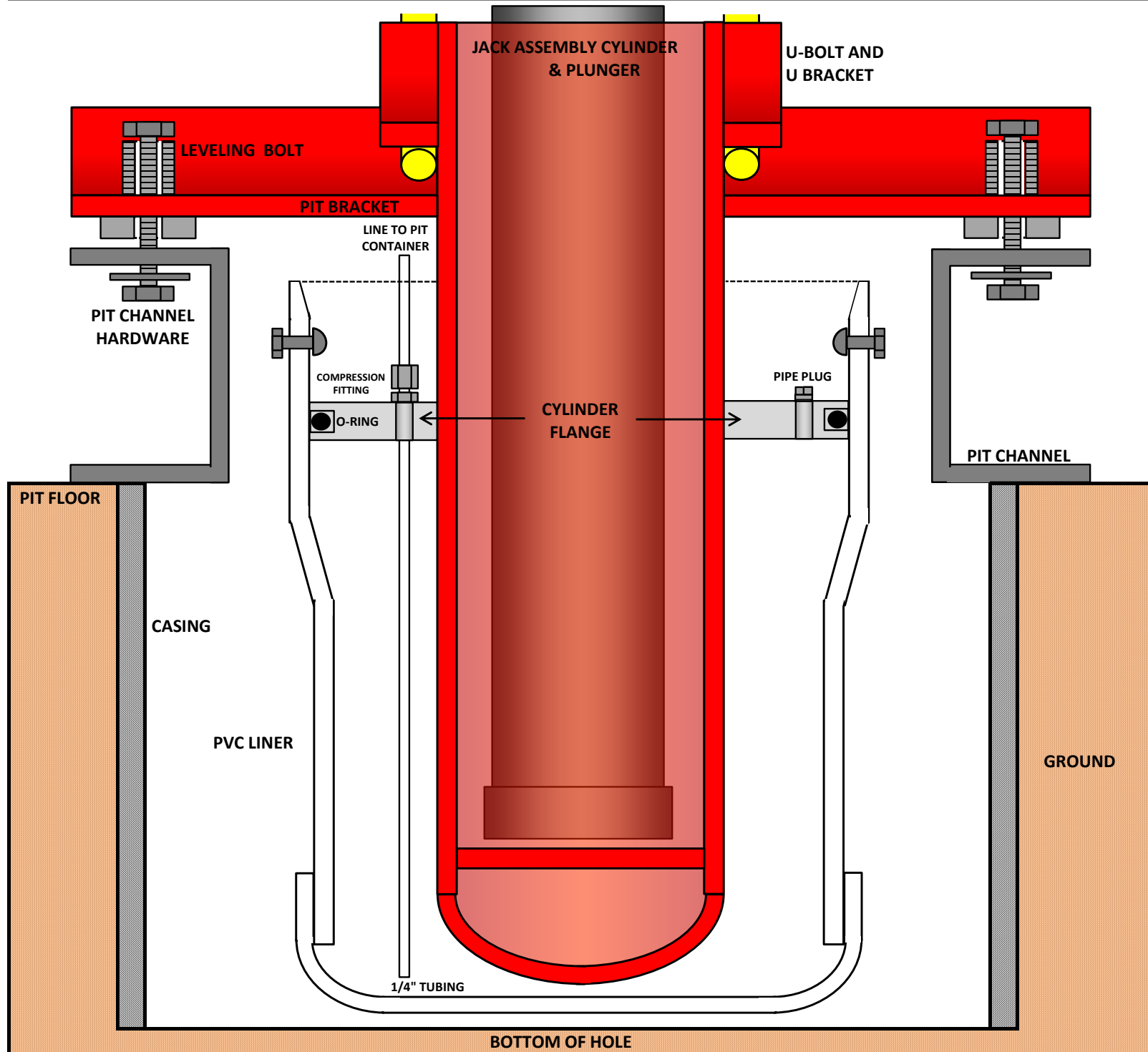
#### Monitoring Instructions

- 1) To monitor any possible collection of fluid in the PVC Liner, remove the pipe plug in the Cylinder Flange.
- 2) Insert a dipstick into pipe plug hole to the bottom of the PVC Liner to determine if fluids are collecting inside the PVC Liner.

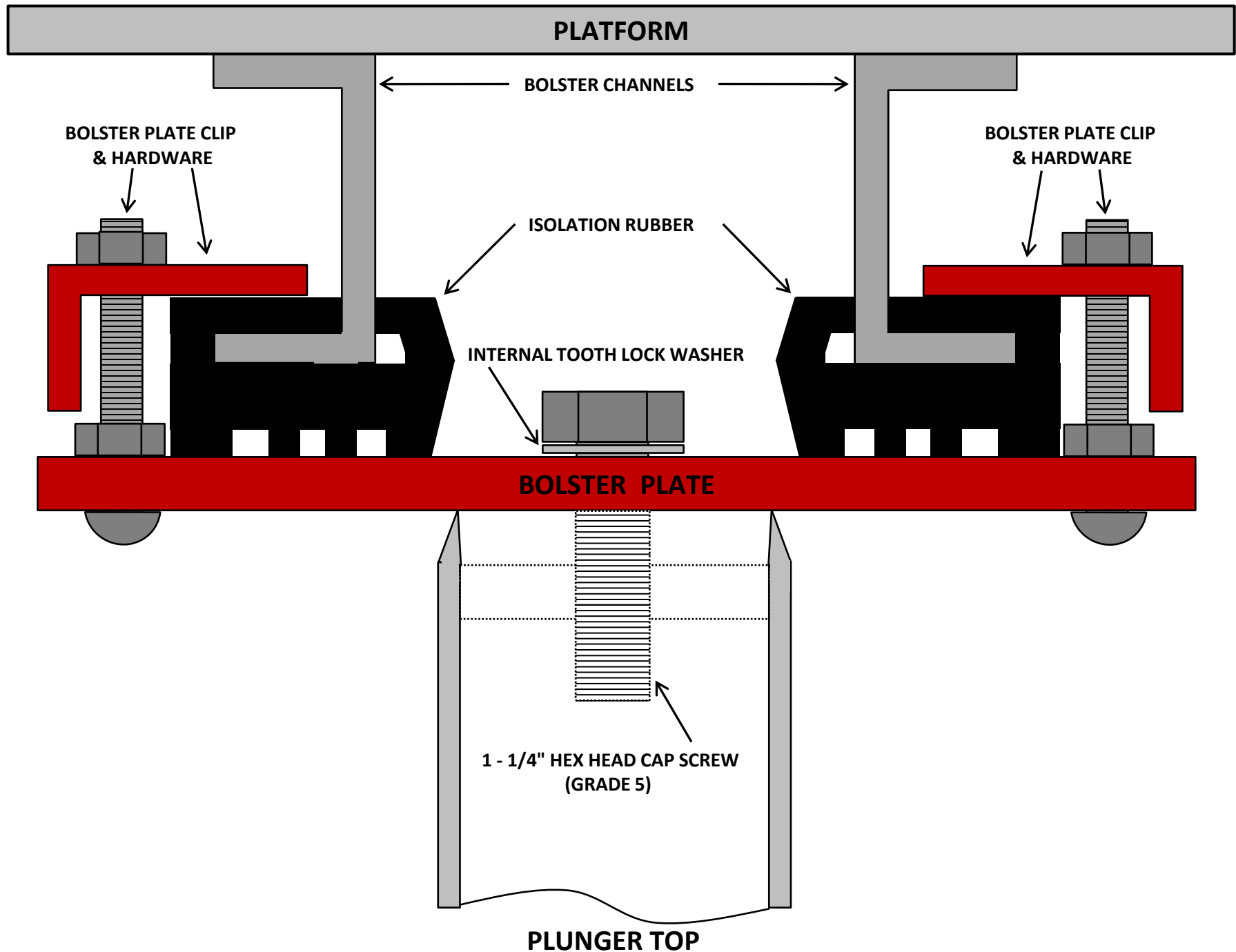
#### Recovery Instructions

- 1) To remove any fluids that collect inside the PVC Liner, remove the pipe plug in the Cylinder Flange and insert an air fitting with a 1/8" NPT thread.
- 2) Lightly pressurize (10 psi - air) the PVC Liner, using the air fitting in Step #1, to force fluids up through the 1/4" tubing into a pit container.

HYDRAULIC ELEVATORS, LLC - SEALED PVC LINER WITH MONITOR AND RECOVERY SYSTEM DIAGRAM



# HYDRAULIC ELEVATORS, LLC - HHCS BOLSTER PLATE ATTACHMENT DIAGRAM





HYDRAULIC ELEVATORS, LLC

94 Valley Hill Road

Riverdale, Georgia 30274

Tel: 770-478-8344

Fax: 770-473-0296

Email: [info@hydraulicelevatorsllc.com](mailto:info@hydraulicelevatorsllc.com)

## SPLIT FLANGE CUSHION HEAD PACKING INSTRUCTIONS

Inspect full length of plunger. Remove all nicks and scratches using 180 or 240 grit aluminum oxide cloth. Deep scratches should be filled using a silver solder or plastic epoxy. Sand solder or epoxy flush to plunger surface. Wrap a nylon stocking or equivalent around the plunger. Hold the stocking stationary while running the plunger through a full stroke. Carefully unwrap the stocking being sure to note of its location around the plunger. A nick or burr will tear the stocking in line with where the stocking was wrapped. Again remove all nicks and scratches with 180 or 240 grit emery cloth.

Land car on temporary blocking to provide a safe working environment. Turn the main power supply off. Disconnect and bottom the plunger into the cylinder using the manual lowering valve. In some instances it may be necessary to force the plunger down due to overhead piping, etc. Close pit shut-off valve.

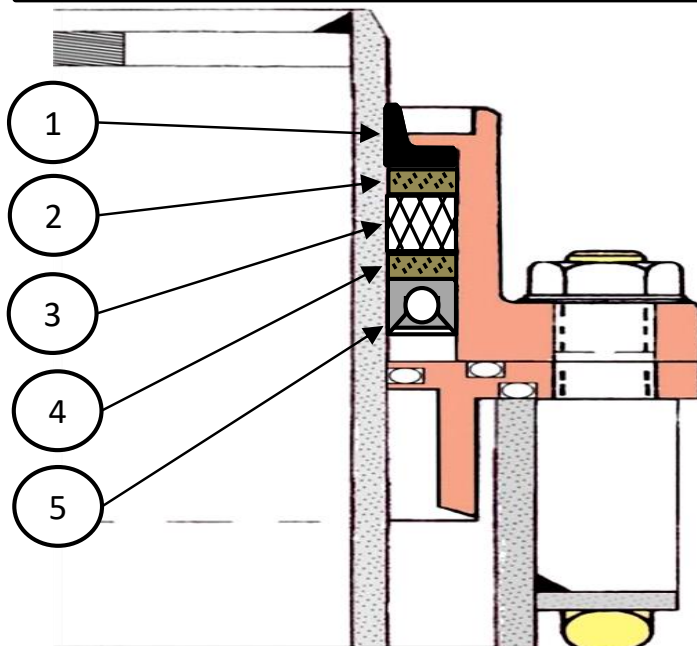
De-burr the plunger top. Disconnect the drip line and return line if used. Remove the U-bolts that hold the Split Head onto the cylinder. Remove the Split Head Packing Ring and replace with new O'ring (supplied).

Turn the Split head Packing Ring over onto a clean working surface. Drive the old wiper, guide bearing(s), and packing(s) out of the ring. Inspect and clean the ring and remove any dirt that may have collected before installing new seal kit. Install the new seal kit in the packed arrangement as received from the manufacturer.

Clean the Split Head Cushion surface. Gently slide the ring over the plunger until the packing starts to engage. Using a mallet, drive the Split Head Packing Ring onto the Split Head Cushion surface. Make sure the Split Head Cushion has bottomed onto the cylinder. Replace the U-bolts.

Open the pit valve. Close the manual lowering valve. Turn on the main power supply. Raise the plunger and reconnect to the car. **It is absolutely critical that the plunger is located onto the bolster plate as before.** Raise the car to remove the temporary blocking. Clean up any excess oil. Run the elevator several times to check for leaks.

### HYDRAULIC ELEVATORS, LLC HEAD PACKING CONFIGURATION



1 WIPER BEARING

2 GUIDE BEARING

3 TEFLUBE

4 GUIDE BEARING

5 PACKING SEAL





HYDRAULIC ELEVATORS, LLC  
 94 Valley Hill Road  
 Riverdale, Georgia 30274  
 Tel: 770-478-8344  
 Fax: 770-473-0296  
 Email: [info@hydraulicelevatorsllc.com](mailto:info@hydraulicelevatorsllc.com)

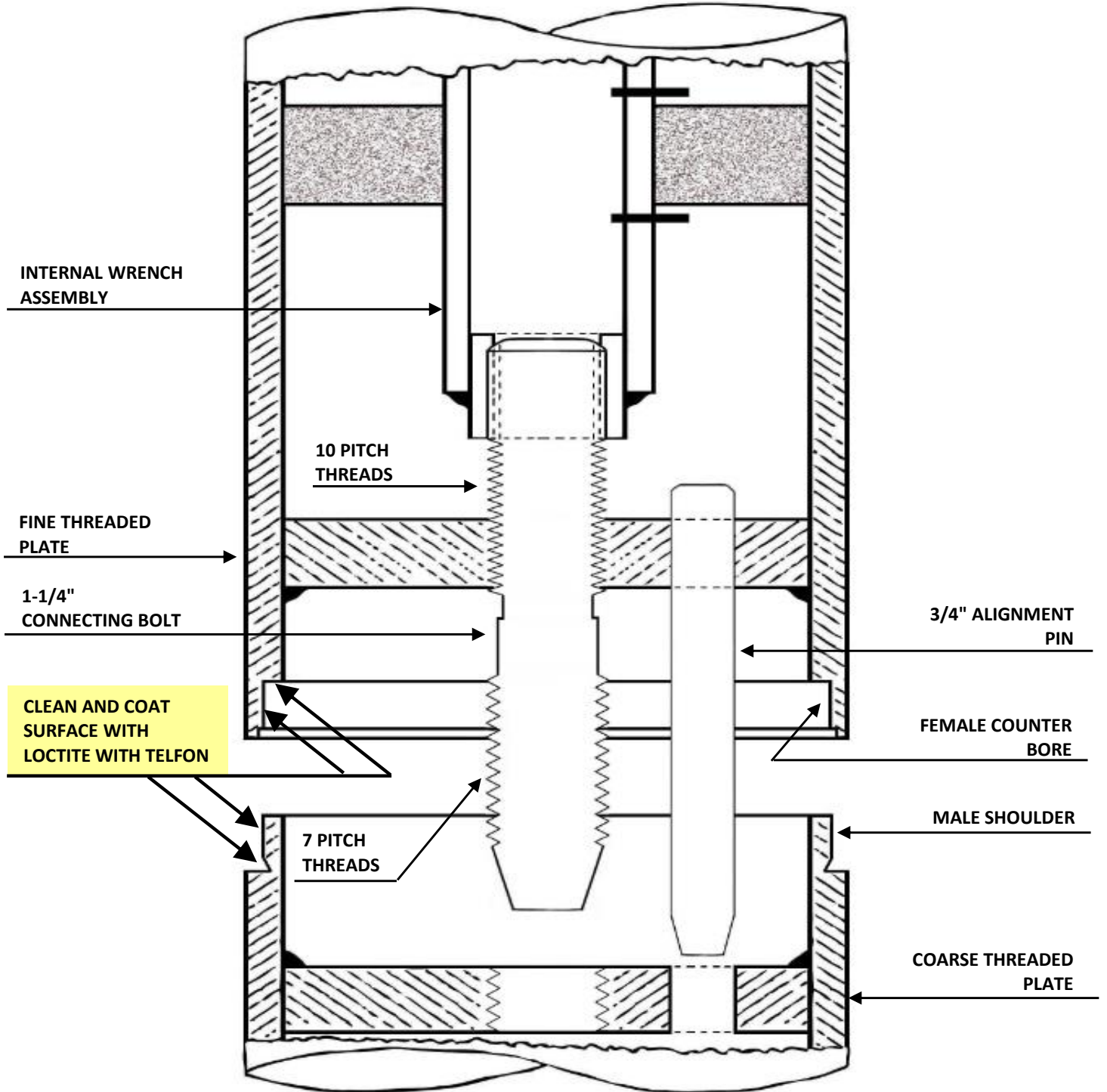
# **HYDRAULIC ELEVATORS, LLC**

## **PIT CHANNEL CHART**

### **CHART OF NEW "K" DIMENSIONS WHEN USING PVC TUBING & WITHOUT PVC**

<b>CYL</b>	<b>PVC</b>	<b>"K"</b>	<b>LGTH PIT BK</b>	<b>PIT ANGLE</b>	<b>BTW CHAN</b>	<b>K-No PVC</b>	<b>COLOR CODE</b>
5"	8"	13-3/4"	7-3/4"	2 x 2 x 3/8"	11-3/4"	10-13/16"	Red
6"	8"	14-1/2"	7-3/4"	2 x 2 x 3/8"	12-1/2"	11-5/8"	Red
6"	10"	16-1/2"	9-1/8"	2 x 3 x 3/8"	14-1/2"	11-5/8"	Yellow
7"	10"	15-1/4"	7-3/4"	2 x 3 x 3/8"	13-1/4"	13"	Red
7"	12"	17-1/4"	9-1/8"	2 x 3 x 3/8"	15-1/4"	13"	Yellow
8"	10"	15-7/8"	7-3/4"	2 x 3 x 3/8"	13-7/8"	13"	Red
8"	12"	18"	9-1/8"	2 x 3 x 3/8"	16"	13"	Yellow
10"	12"	17-3/8"	7-3/4"	2 x 3 x 3/8"	15-3/8"	14-1/2"	Red
10"	14"	19-1/2"	9-1/8"	2 x 3 x 3/8"	17-1/2"	14-1/2"	Yellow
10"	16"	19-1/2"	9-1/8"	2 x 3 x 3/8"	17-1/2"	14-1/2"	Yellow
12"	16"	20-7/8"	9-1/8"	2 x 3 x 3/8"	18-7/8"	15-5/8"	Yellow

# HYDRAULIC ELEVATORS LLC, PLUNGER JOINT DRAWING





HYDRAULIC ELEVATORS, LLC

94 Valley Hill Road

Riverdale, Georgia 30274

Tel: 770-478-8344

Fax: 770-473-0296

Email: [info@hydraulicelevatorsllc.com](mailto:info@hydraulicelevatorsllc.com)

## ASSEMBLY INSTRUCTIONS: 3 PIECE PLUNGER ASSEMBLY WITH DIFFERENTIAL CONNECTING BOLT

NOTE: 3/4" Drive Extension (supplied) and two wood clamping blocks (not supplied) required for assembly.

Note that the crates have been marked identifying plunger sections and top ends. When possible, the bottom plunger section may be shipped inside the cylinder. Do not uncrate until plunger sections are standing in the hoistway with tops up. Provide safety sling under crate bottom when hoisting. Plunger sections are covered with plastic film and rust proofing compound. It is recommended that this protective compound not be removed until entire assembled plunger is ready to be cleaned and head installed. This could be very important if for any reason it was necessary to leave the job for any extended period of time such as overnight or weekend.

Plunger sections are joined with a short length of 1-1/4" connecting bolt, and are sealed with Permatex Thread Sealant with PTFE (supplied). Wrenches for Assembly are shipped inside each plunger section.

Lower bottom section into cylinder, suspended by wood clamping blocks located 2" below plunger joint. Make sure that fine threads of connecting bolt are threaded all the way into plate in the top section and backed out two turns. This has been factory set and should not require any change in the field. Thoroughly clean counter bore in mid-plunger section and machined shoulder on bottom section. Apply Loctite with Teflon on all machined surfaces of joint so that all areas are covered. Align the 3/4" alignment pin with offset hole in bottom section and lower mid-section until coarse threads of connecting bolt just touches threaded plate in bottom sections. Using 3/4" drive extension, tighten connecting bolt until joint is pulled together. This requires approximately 18 turns. Torque to approximately 300 ft./pounds while holding plunger so that it cannot wobble. Loosen plunger clamps and lower sections into cylinder and reclamp as instructed above. Remove 3/4" drive extension and repeat above process for top to mid assembly. Using 3/4" drive extension in top section, tighten connecting bolt until joint is pulled together. This requires approximately 18 turns and 300 ft./pounds to complete assembly.

Raise assembled plunger and clean thoroughly as plunger is carefully lowered into cylinder. Assemble head and immediately fill assembly with oil.